



Vacuum Pumps for moist Gases



Series LABOPORT® SD N 820.3 FT.40.18 Vacuum Pump

LABOPORT® SD Self-drying Vacuum Pump for moist Gases

Technical features:

- Pure transferring and evacuation
- Highly compatible with vapours and condensation
- Chemically-resistant
- Therefore suitable for highly aggressive or corrosive gases and vapours
- Maintenance-free
- Environmentally friendly
- Gastight, leakage rate approx. 6×10^{-3} mbar x l/s, not tested in serial production.

The chemically-resistant series N 820.3 FT.40.18 diaphragm pump is a twin-head unit with an integrated KNF self-drying system. There is a wide range of applications for this pump in laboratories, especially whenever clean vacuum is required and moist gases must be pumped down. Examples include vacuum-drying of vacuum drying chambers (for drying or heat-treating substances and components) or steam sterilizers for sterilizing instruments, vessels, filters and textiles. Due to its high resistance to aggressive media, this pump can be used universally.

The heart of these very compact pumps are KNF structured diaphragms (PTFE-coated). These patented diaphragms were stress-optimized using the Finite Elements method. As a result, we were able to make the pumps smaller while increasing the service life of the diaphragm.

The KNF self-drying system allows condensed liquid to be blown out of the pump heads at high speed during evacuation. The vacuum in the recipient remains constant. The drying cycle can be adjusted to the requirements of the individual process using three variables. After drying, the pump reaches a better vacuum and is able to evacuate significantly faster compared with pumps without a drying system.

Material in contact with the pumped media

Type/Order No.	Pump head	Diaphragm	Valves
N 820.3 FT.40.18	PTFE	PTFE-coated	FFPM

Technical data:

	N 820.3 FT.40.18
Delivery (l/min) ¹⁾	20
Ultimate vacuum (mbar abs.)	10
Operating pressure (bar g)	1
Connectors for tube (mm)	ID 10
Permissible gas and ambient temperature	+5...+40 °C
Mains	230V/50Hz
Motor protection	IP 44
Power P ₁	120 W
Operating current	0.7 A
Weight	9.6 kg
Dimensions	
LxHxW (mm)	312/220/177
With thermal switch and power fuse	

Motors with other voltages and frequencies on request.

¹⁾ at atm. pressure

Spare parts

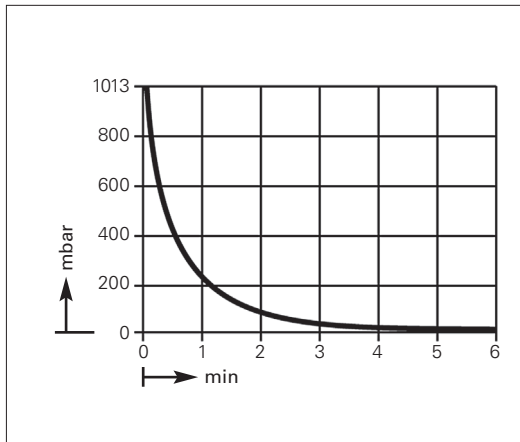
Description	Order No.
Spares kit	057358



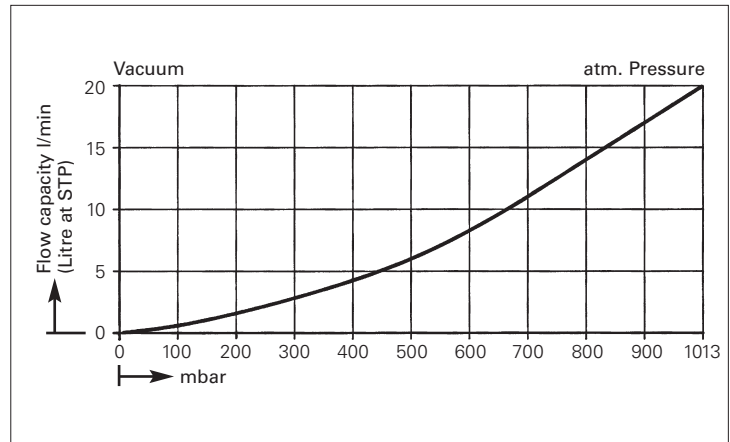
Vacuum Pumps for moist Gases

Dimensions and performance characteristics

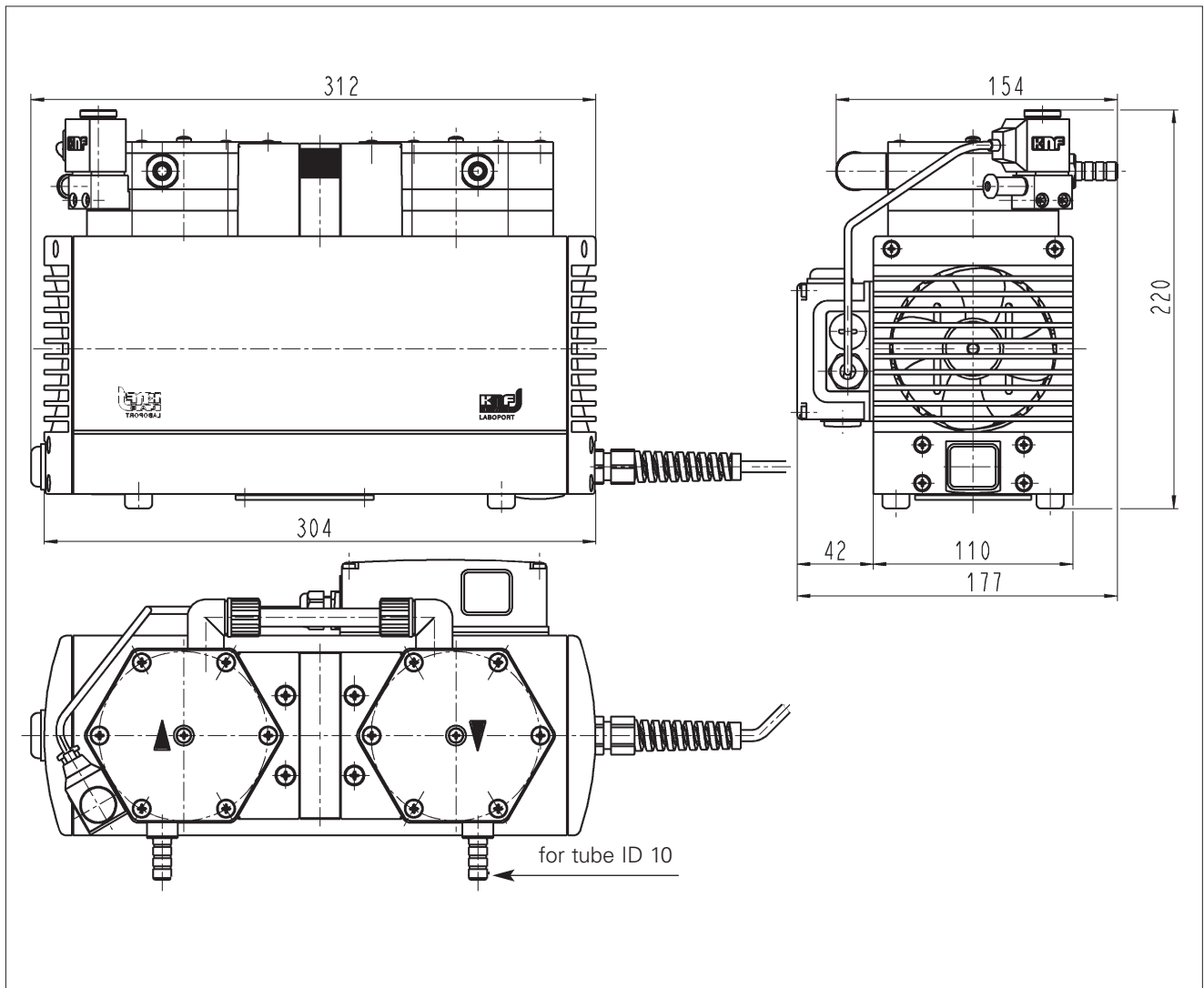
Pump down time for 10 l receiver



Performance characteristics



Dimensions (mm)





Vacuum Pumps for moist Gases



Series LABOPORT® SD N 840.3 FT.40.18 Vacuum Pump

The chemically-resistant series N 840.3 FT.40.18 diaphragm pump is a twin-head unit with an integrated KNF self-drying system. There is a wide range of applications for this pump in laboratories, especially whenever clean vacuum is required and moist gases must be pumped down. Examples include vacuum-drying of vacuum drying chambers (for drying or heat-treating substances and components) or steam sterilizers for sterilizing instruments, vessels, filters and textiles. Due to its high resistance to aggressive media, this pump can be used universally.

The heart of these very compact pumps are KNF structured diaphragms (PTFE-coated). These patented diaphragms were stress-optimized using the Finite Elements method. As a result, we were able to make the pumps smaller while increasing the service life of the diaphragm.

The KNF self-drying system allows condensed liquid to be blown out of the pump heads at high speed during evacuation. The vacuum in the recipient remains constant. The drying cycle can be adjusted to the requirements of the individual process using three variables. After drying, the pump reaches a better vacuum and is able to evacuate significantly faster compared with pumps without a drying system.

LABOPORT® SD Self-drying Vacuum Pump for moist Gases

Technical features:

- Pure transferring and evacuation
- Highly compatible with vapours and condensation
- Chemically-resistant
- Therefore suitable for highly aggressive or corrosive gases and vapours
- Maintenance-free
- Environmentally friendly
- Gastight, leakage rate approx. 6×10^{-3} mbar x l/s, not tested in serial production.

Material in contact with the pumped media

Type/Order No.	Pump head	Diaphragm	Valves
N 840.3 FT.40.18	PTFE	PTFE-coated	FFPM

Technical data:

	N 840.3 FT.40.18
Delivery (l/min) ¹⁾	34
Ultimate vacuum (mbar abs.)	10
Operating pressure (bar g)	1
Connectors for tube (mm)	ID 10
Permissible gas and ambient temperature	+5...+40 °C
Mains	230V/50Hz
Motor protection	IP 44
Power P ₁	245 W
Operating current	1.5 A
Weight	12.9 kg
Dimensions	
LxHxW (mm)	341/239/189
With thermal switch and power fuse	

Motors with other voltages and frequencies on request.

¹⁾ at atm. pressure

Spare parts

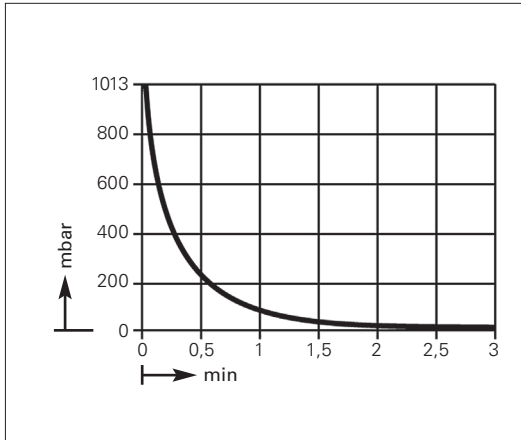
Description	Order No.
Spares kit	057359



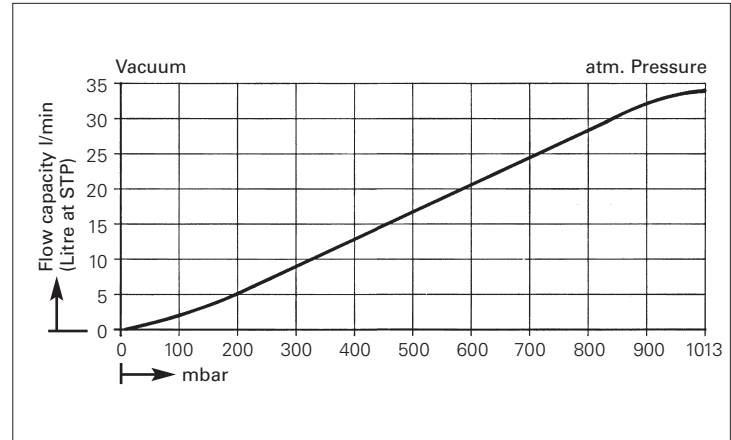
Vacuum Pumps for moist Gases

Dimensions and performance characteristics

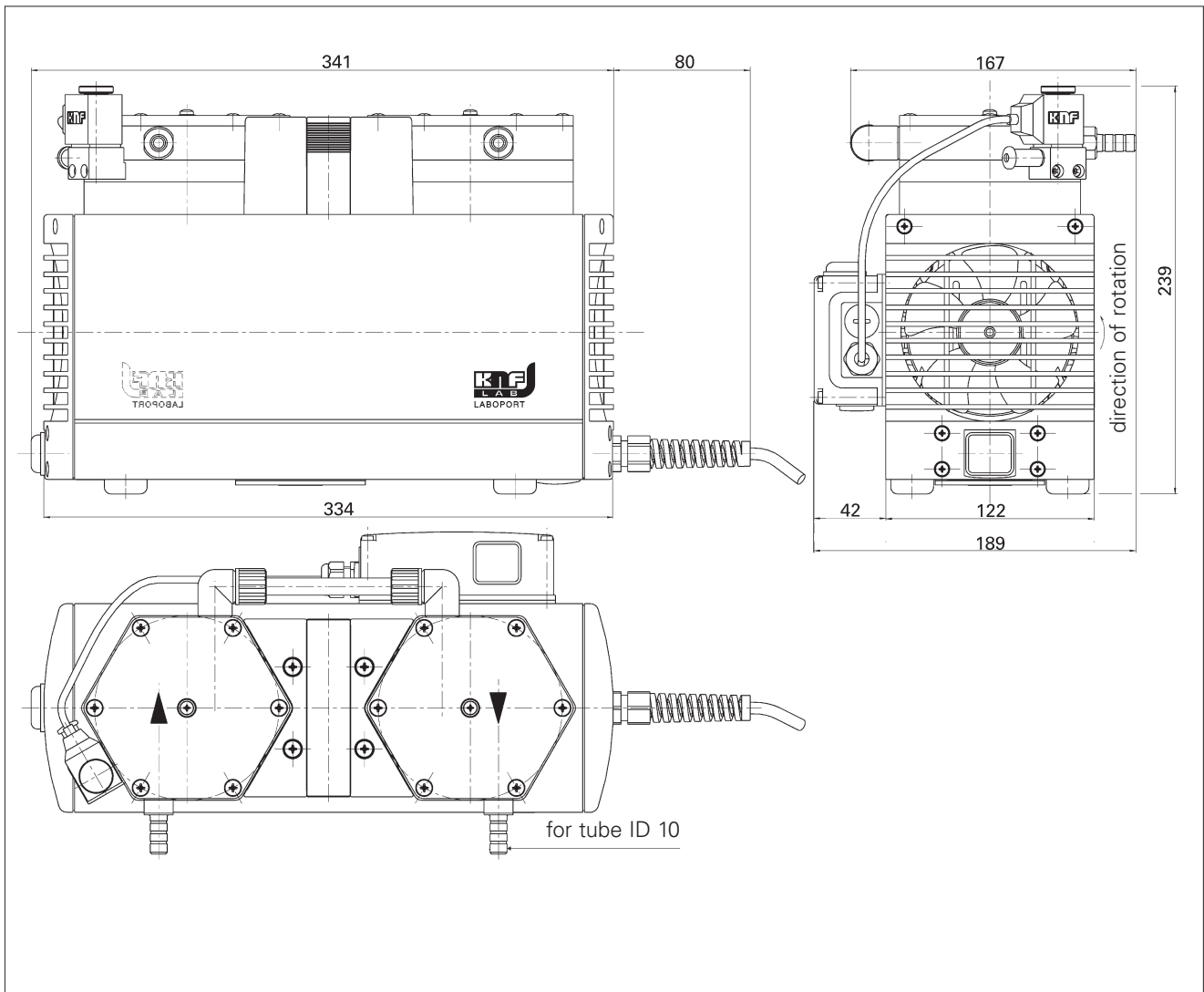
Pump down time for 10 l receiver



Performance characteristics



Dimensions (mm)





Vacuum Pumps for moist Gases



Series LABOPORT® SD N 842.3 FT.40.18 Vacuum Pump

LABOPORT® SD Self-drying Vacuum Pump for moist Gases

Technical features:

- Pure transferring and evacuation
- Highly compatible with vapours and condensation
- Chemically-resistant
- Therefore suitable for highly aggressive or corrosive gases and vapours
- Maintenance-free
- Environmentally friendly
- Gastight, leakage rate approx. 6×10^{-3} mbar x l/s, not tested in serial production.

The chemically-resistant series N 842.3 FT.40.18 diaphragm pump is a twin-head unit with an integrated KNF self-drying system. There is a wide range of applications for this pump in laboratories, especially whenever clean vacuum is required and moist gases must be pumped down. Examples include vacuum-drying of vacuum drying chambers (for drying or heat-treating substances and components) or steam sterilizers for sterilizing instruments, vessels, filters and textiles. Due to its high resistance to aggressive media, this pump can be used universally.

The heart of these very compact pumps are KNF structured diaphragms (PTFE-coated). These patented diaphragms were stress-optimized using the Finite Elements method. As a result, we were able to make the pumps smaller while increasing the service life of the diaphragm.

The KNF self-drying system allows condensed liquid to be blown out of the pump heads at high speed during evacuation. The vacuum in the recipient remains constant. The drying cycle can be adjusted to the requirements of the individual process using three variables. After drying, the pump reaches a better vacuum and is able to evacuate significantly faster compared with pumps without a drying system.

Material in contact with the pumped media

Type/Order No.	Pump head	Diaphragm	Valves
N 842.3 FT.40.18	PTFE	PTFE-coated	FFPM

Technical data:

	N 842.3 FT.40.18
Delivery (l/min) ¹⁾	34
Ultimate vacuum (mbar abs.)	4
Operating pressure (bar g)	1
Connectors for tube (mm)	ID 10
Permissible gas and ambient temperature	+5...+40 °C
Mains	230V/50Hz
Motor protection	IP 44
Power P ₁	245 W
Operating current	1.5 A
Weight	13.7 kg
Dimensions	
LxHxW (mm)	341/242/189
With thermal switch and power fuse	

Motors with other voltages and frequencies on request.

¹⁾ at atm. pressure

Spare parts

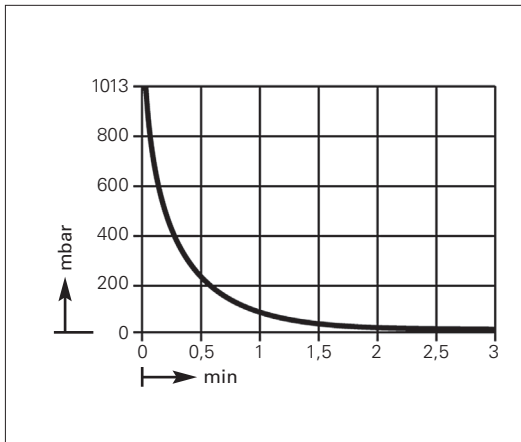
Description	Order No.
Spares kit	057359



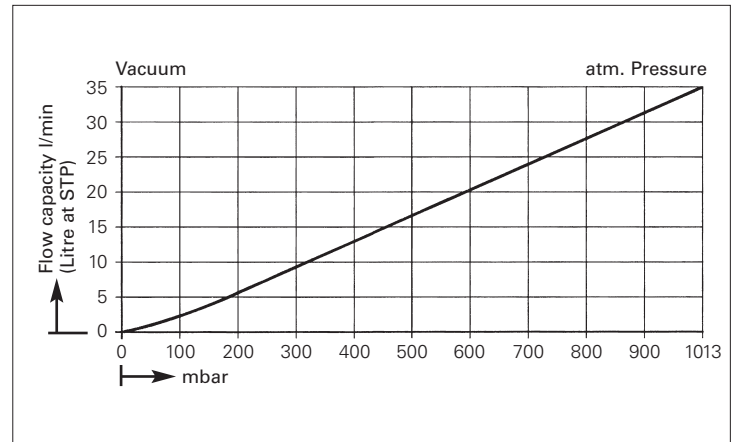
Vacuum Pumps for moist Gases

Dimensions and performance characteristics

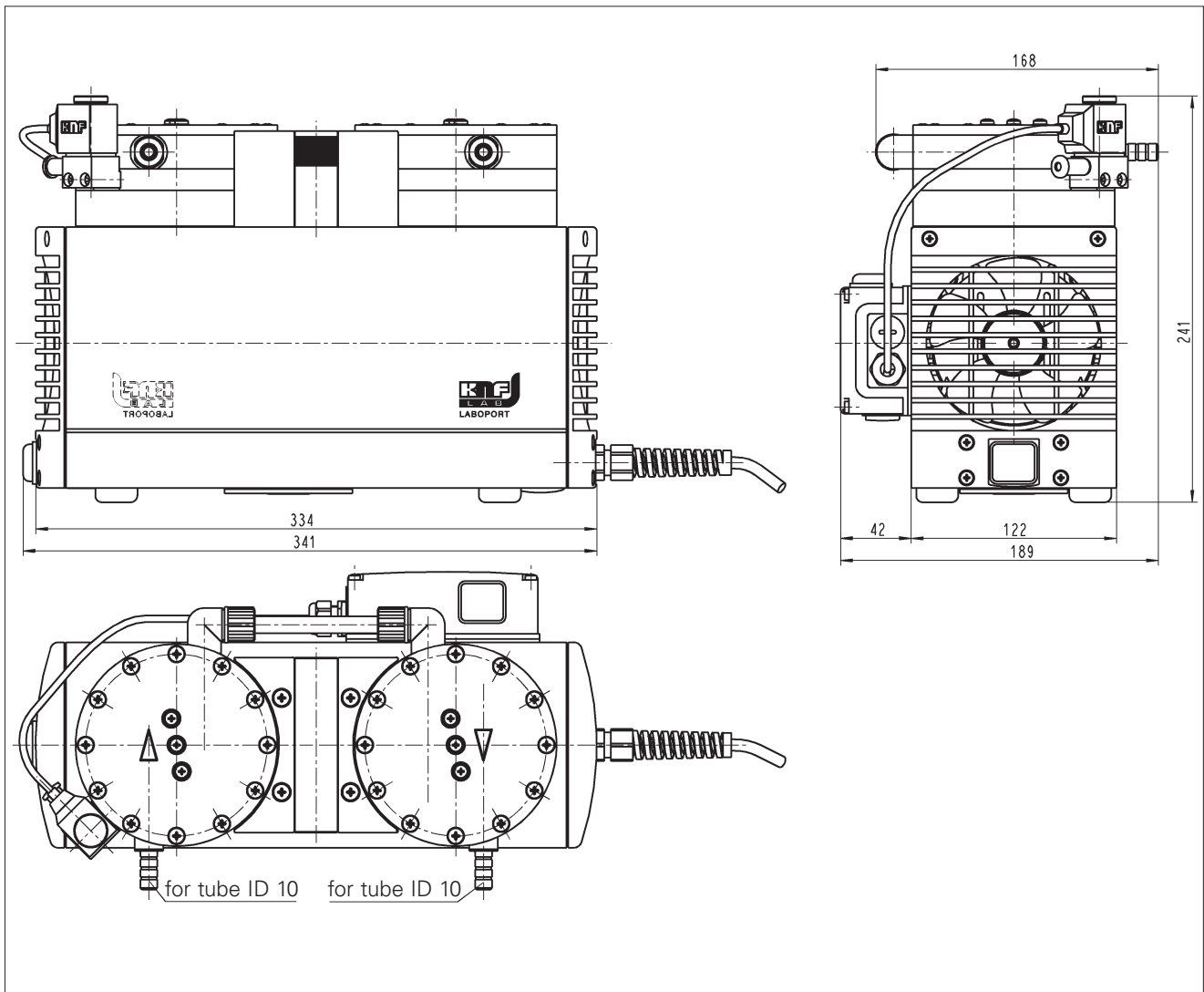
Pump down time for 10 l receiver



Performance characteristics



Dimensions (mm)





Vacuum Pumps for moist Gases



Self drying Vacuum Pump for moist Gases

Series N 860.3 FT.40.18 Vacuum Pump

Technical features:

- Pure transferring and evacuation
- Highly compatible with vapours and condensation
- Chemically-resistant
- Therefore suitable for highly aggressive or corrosive gases and vapours
- Maintenance-free
- Environmentally friendly
- Gastight, leakage rate approx. 6×10^{-3} mbar x l/s, not tested in serial production.

The chemically-resistant series N 860.3 FT.40.18 diaphragm pump is a twin-head unit with an integrated KNF self-drying system. There is a wide range of applications for this pump in laboratories, especially whenever clean vacuum is required and moist gases must be pumped down. Examples include vacuum-drying of vacuum drying chambers (for drying or heat-treating substances and components) or steam sterilizers for sterilizing instruments, vessels, filters and textiles. Due to its high resistance to aggressive media, this pump can be used universally.

The heart of these very compact pumps are KNF structured diaphragms (PTFE-coated). These patented diaphragms were stress-optimized using the Finite Elements method. As a result, we were able to make the pumps smaller while increasing the service life of the diaphragm.

The KNF self-drying system allows condensed liquid to be blown out of the pump heads at high speed during evacuation. The vacuum in the recipient remains constant. The drying cycle can be adjusted to the requirements of the individual process using three variables. After drying, the pump reaches a better vacuum and is able to evacuate significantly faster compared with pumps without a drying system.

Material in contact with the pumped media

Type/Order No.	Pump head	Diaphragm	Valves
N 860.3 FT.40.18	PTFE	PTFE-coated	FFPM

Technical data:

	N 860.3 FT.40.18
Delivery (l/min) ¹⁾	60
Ultimate vacuum (mbar abs.)	4
Operating pressure (bar g)	1
Connectors for tube (mm)	ID 12
Permissible gas and ambient temperature	+5...+40 °C
Mains	230V/50Hz
Motor protection	IP 54
Power P ₁	220 W
Operating current	1.6 A
Weight	14.8 kg
Dimensions	
LxHxW (mm)	331/278.5/291
With thermal switch and power fuse	

Motors with other voltages and frequencies on request.

¹⁾ at atm. pressure

Spare parts

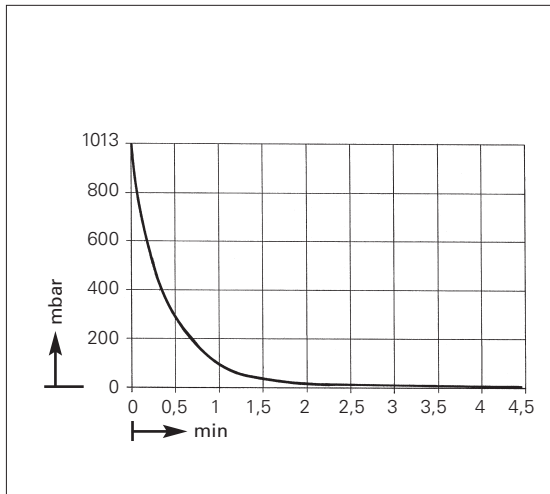
Description	Order No.
Spares kit	047499



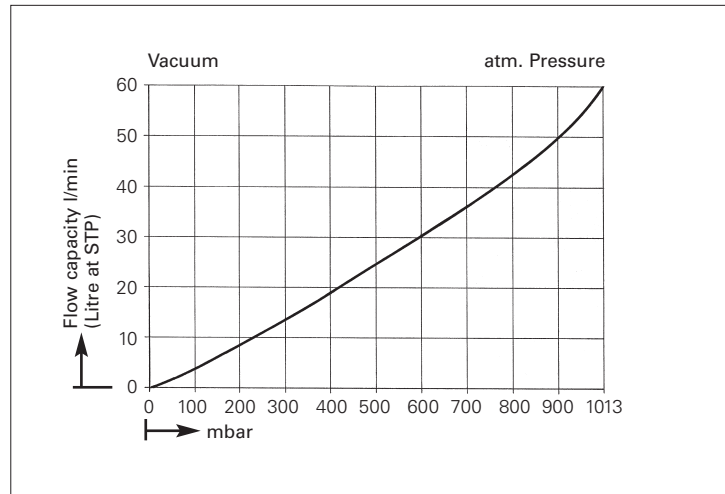
Vacuum Pumps for moist Gases

Dimensions and performance characteristics

Pump down time for 20 l receiver



Performance characteristics



Dimensions (mm)

